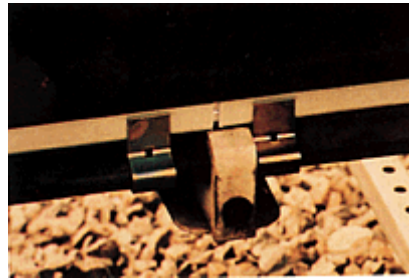


Pultruded Channel for Contact Third Rail Heaters on Mass Transit Systems



Pultruded channel and spring steel clips are now the accepted form of attaching self-regulating heaters to third rails. The channel serves to insulate the heater to insure that only the rail is heated and thus saves energy. Additionally, the channel provides good thermal contact for efficient heat transfer and mechanical protection by encapsulating the exposed section of the heater. The unique design allows simple installation and rework.

Pultruded by Glasforms, Inc., the channel is required to meet stringent mechanical, thermal, chemical resistant, and flammability requirements, including a UL 94V-0 rating. The composite is designed to withstand the environmental extremes encountered in sub zero winters to hot, humid summers.

Materials: Flame retardant polyester/mat/roving fiberglass composite

Properties: UL 94V-0 rated, energy efficient, low thermal conductivity, corrosion resistant, simple installation, and rework

Size: .188" x 1.150" channel

Weight: .17 lbs./lineal foot

For additional information write or call:

Glasforms, Inc. • 271 Barnard Avenue • San Jose, CA 95125

(888)297-3800 • Fax (408)297-0601 • sales@glasforms.com • <http://www.glasforms.com>